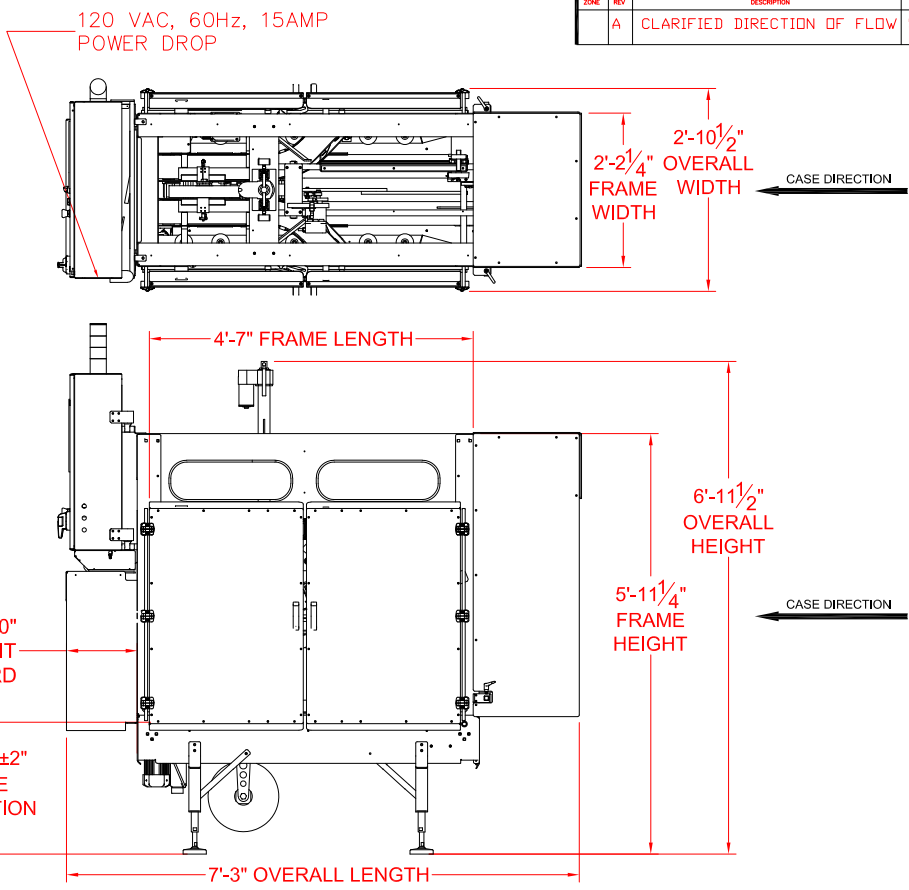
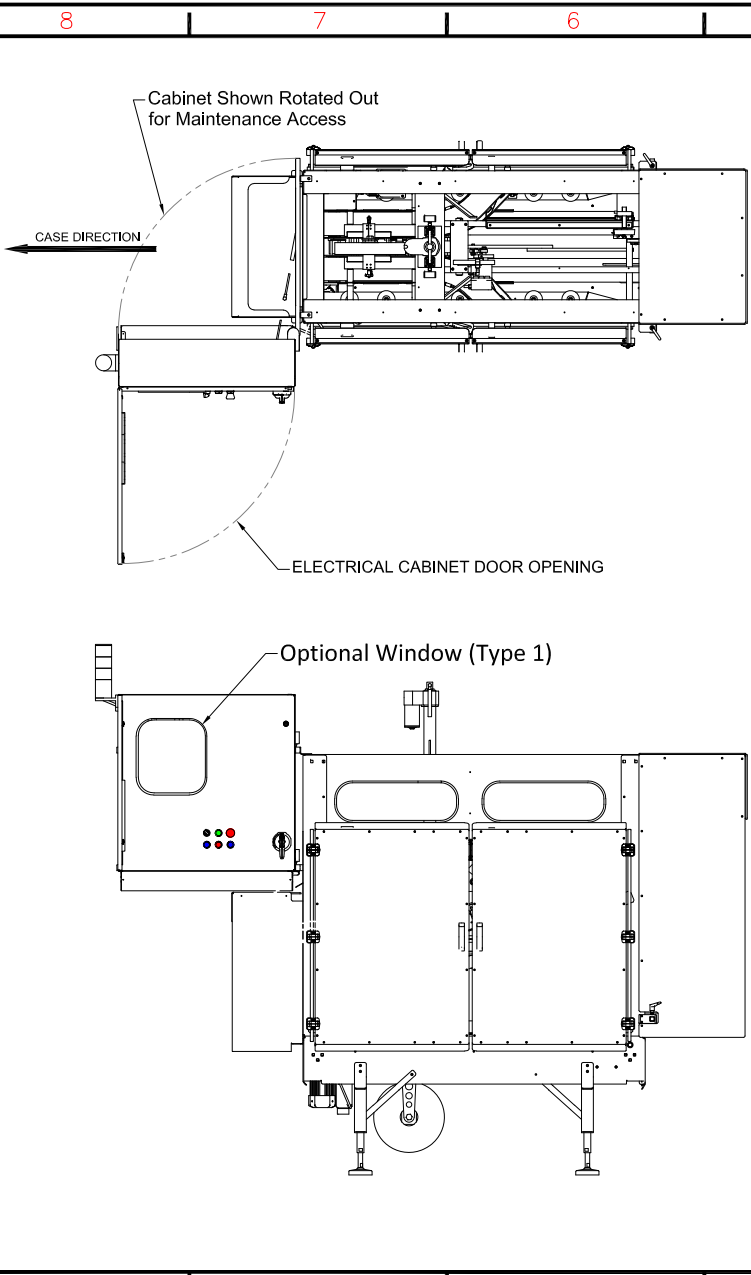


ZONE		REV	DESCRIPTION	REVISIONS	DATE	DRAFTSMAN
A			CLARIFIED DIRECTION OF FLOW		5/17/21	CMC



STANDARD SPECIFICATIONS FOR PDI CTA TAPE SEALER

CONSTRUCTION: STAINLESS STEEL WITH SS NEMA 4X ENCLOSURES
ELECTRICAL: 120 VAC, 1 PHASE, 60 Hz, FUSED @ 15 AMPS
MOTOR: 1/2 HP
PLC: AB COMPACTLOGIX 5096-L320ER
OIT: PUSHBUTTON**
AIR: NONE REQUIRED
TAPE HEAD: DEKKA 22**
SPEED: UP TO 25 CASES PER MINUTE
****OPTIONS AVAILABLE**
CASE SIZE RANGE: OTHER SIZES AVAILABLE, CONSULT SALES
 LENGTH MIN = 10 MAX = 24
 WIDTH MIN = 6 MAX = 16
 HEIGHT MIN = 4 MAX = 12
 FOR BEST CASE CLOSING THERE SHOULD BE A 1/8" GAP BETWEEN MAJOR FLAPS WHEN CLOSED

FALLAS AUTOMATION		CUSTOMER NAME/ PLANT LOCATION:	
7000 IMPERIAL DR. WACO, TEXAS 76712 PHONE: (254) 772-9524 FAX: (254) 751-1242 www.fallasautomation.com		TITLE: PDI MODEL CTA AUTOMATIC CASE TOP CLOSER TAPE SEALER	
DRAWN BY: CMC	SIZE: JOB-50# D	DWG NO.: CTA 2021	REV: B
APPROVED BY: CMC	SCALE:	DATE: 01/29/21	QUOTE/PDF
<p>CONFIDENTIALITY STATEMENT THIS DRAWING HAS NOT BEEN PUBLISHED. IT IS THE EXCLUSIVE PROPERTY OF FALLAS AUTOMATION AND IS PROVIDED TO RECIPIENT FOR HIS/HER USE ONLY. FROM THE FOLLOWING CONDITIONS: THE RECIPIENT SHALL RETURN THE DRAWING TO FALLAS AUTOMATION IMMEDIATELY UPON REQUEST, AND SHALL NOT REPRODUCE, COPY, DISCLOSE TO THIRD PARTY OR OTHERWISE DISPOSE OF, DIRECTLY OR INDIRECTLY, THE ORIGINAL OR ANY DUPLICATES OF THE DRAWING WITHOUT THE WRITTEN CONSENT OF FALLAS AUTOMATION. RECIPIENT SHALL NOT DISCLOSE NOR DISCLOSE TO A THIRD PARTY THE INFORMATION CONTAINED IN THE DRAWING.</p>			